

SLPX SERIES

STAINLESS STEEL SLOPED-TOP ENCLOSURES



STANDARD AND CUSTOM SOLUTIONS

The SLPX Series of products is part of a full line of sloped-top products uniquely designed to provide a clean solution for critical washdown and processing areas. Products are UL Listed, rated NEMA 4X, and feature a 15° sloped roof for runoff.

Available in three multi-gang enclosure sizes, units feature 1" external mounting feet allowing for runoff and sanitation inspection. A barrier between compartments, with a pass-through provision, adds extra safety for mixed power and control wiring.

Ideally suited for multiple disconnect requirements, save time and money with one box as opposed to individual units. These stainless-steel enclosures are designed for 30A and 60A switches, all with early break auxiliary contacts for VFD and starter interface. A high visibility padlockable handle satisfies OSHA LO/TO compliance.

Units are modular in design and can accommodate control devices including push buttons, selector switches, indicator lights and wiring device options. Choose from pre-configured combinations or contact us for a customized solution.


SLPX Series

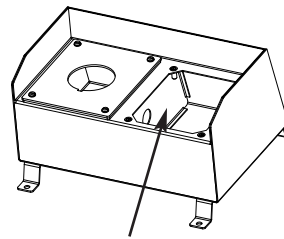
Stainless Steel Sloped-Top Enclosures

Catalog No.	Module 1	Module 2	Module 3	Module 4
SLPX2A-200	30A 20 HP @480V Switch	30A 20 HP @480V Switch		
SLPX3A-300	30A 20 HP @480V Switch	30A 20 HP @480V Switch	30A 20 HP @480V Switch	
SLPX4A-400	30A 20 HP @480V Switch	30A 20 HP @480V Switch	30A 20 HP @480V Switch	30A 20 HP @480V Switch
SLPX3A-301	30A 20 HP @480V Switch	2 x Test-Off-Run Selector Switch	30A 20 HP @480V Switch	
SLPX3A-302	30A 20 HP @480V Switch	2 x Emergency E Stop	30A 20 HP @480V Switch	

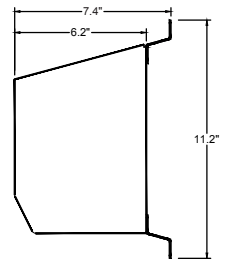
*Consult Factory to Design your Own Custom Configuration.

Compliances and Features of Enclosures

- Switches: SCCR, 65kA RMS and "Suitable as Motor Disconnect" per NEC 430-109 (a)(b)
-  Listed Standards 50 & 50E; CSA 22.2 No. 94
- 304 Stainless Steel; NEMA 4X; 12
- One Piece Punched Gasket
- Integrated 1" Standoff Mounting Feet
- 15° Sloped roofs to facilitate run-off of liquids
- Generous drainage channel
- Shrouded design minimizes component damage



Stainless Barrier Between Modules with 1" Pass Through Opening



Side Profile

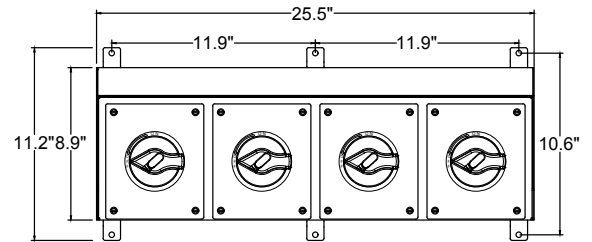
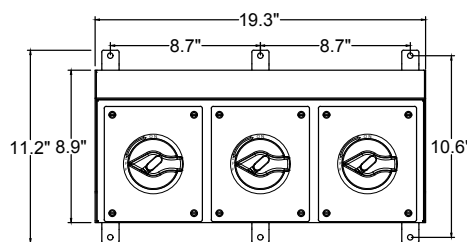
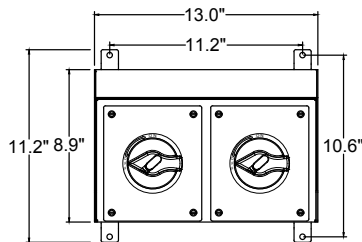
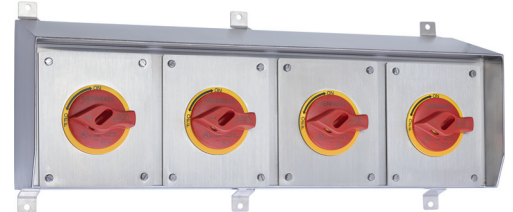
Catalog No. SLPX2A-200



Catalog No. SLPX3A-302



Catalog No. SLPX4A-400



MENNEKES Electrical Products

277 Fairfield Road
Fairfield, NJ 07004

Phone: (800) 882-7584

Fax: (973) 882-5585

Email: info@MENNEKES.com

Website: www.MENNEKES.com